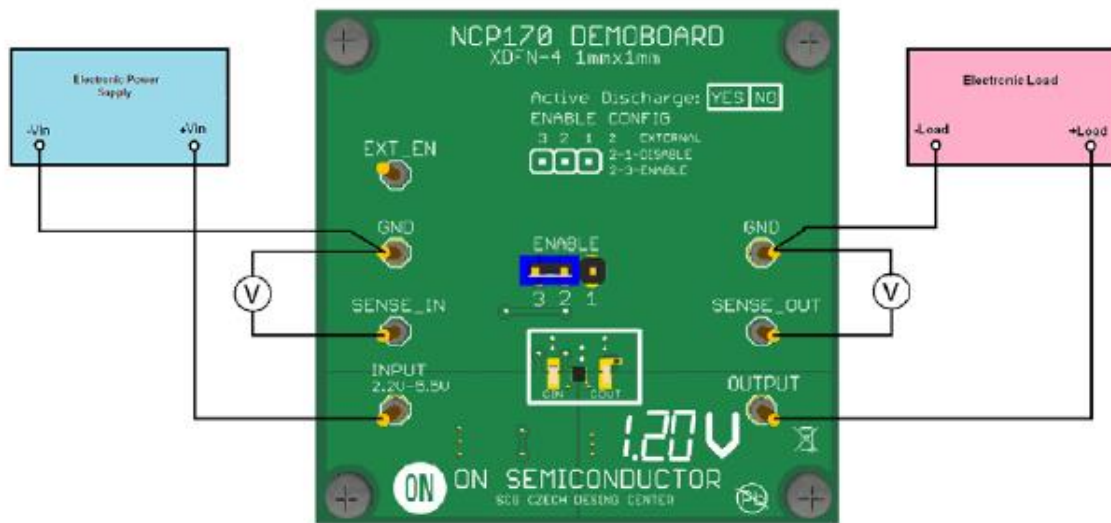




## Test Procedure for the NCP170AMX330GEVB Evaluation Board



### Test procedure:

1. Check the position of jumper and correct this if necessary in accordance with the picture above.
2. Connect the test setup as shown Figure above
3. Apply an input voltage  $V_{in} = 4.3\text{ V}$
4. Apply  $I_{out} = 0\text{mA}$  load.
5. Check that  $V_{out}$  is  $3.3\text{ V} \pm 1\%$ .
6. Increase  $I_{out}$  up to  $0.15\text{ A}$
7. Check that  $V_{out}$  is  $3.3\text{ V} \pm 1\%$ .
7. Increase  $V_{in}$  up to  $5.5\text{ V}$  and decrease the load in accordance with SOA
8. Power down the Load
9. Power down the  $V_{cc}$
10. End of test